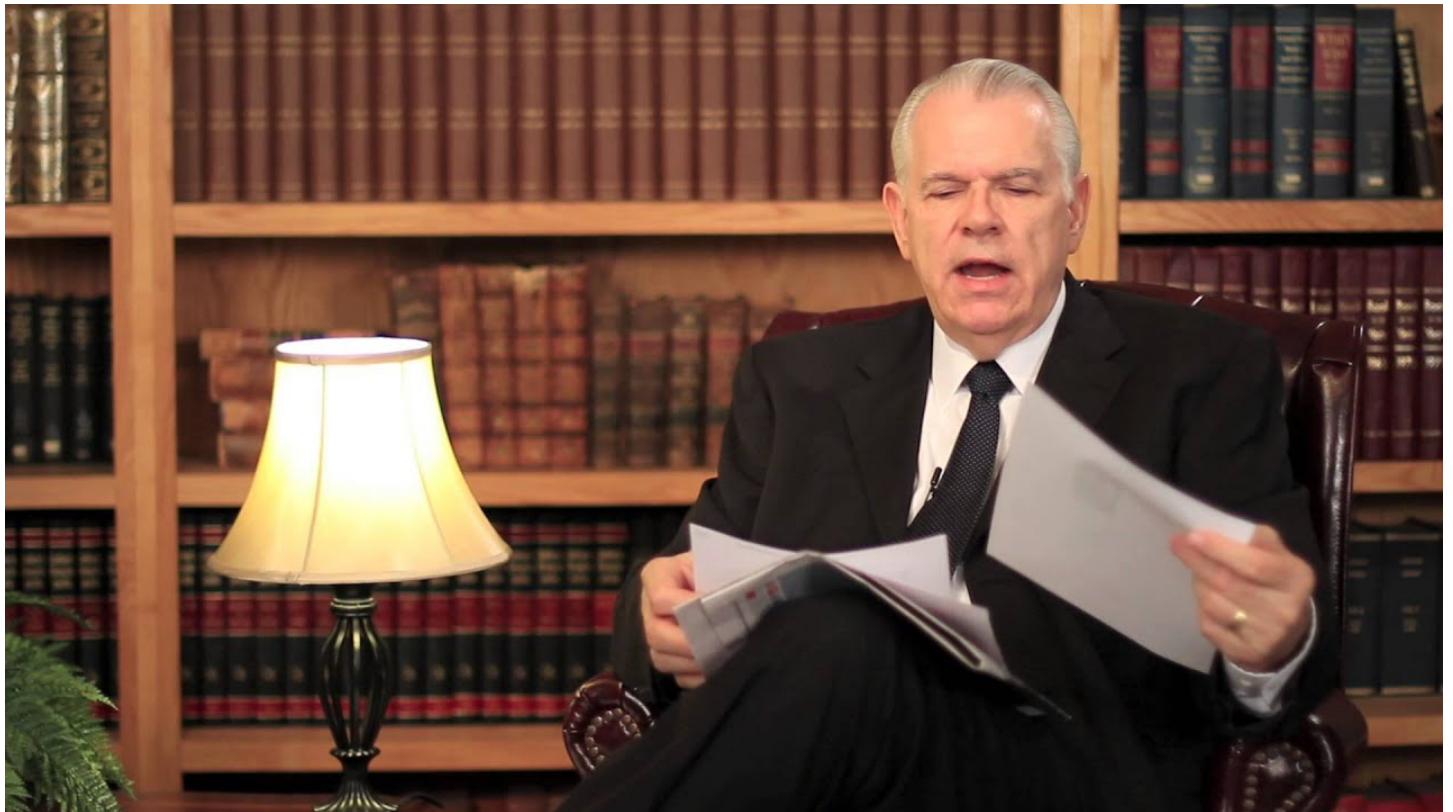


# The John Birch Society

Author: [CSpoehr](#)

Date: November 19, 2012



In this week's news video update, JBS CEO Art Thompson discusses: Voter Fraud; "Coordinated" union protests across Europe; the Socialist Party (aka the Social Democrats) endorsed Obama; Change in Chinese leadership - the same old communists; UN interference in internal affairs; and Communist influences within the ACLU.