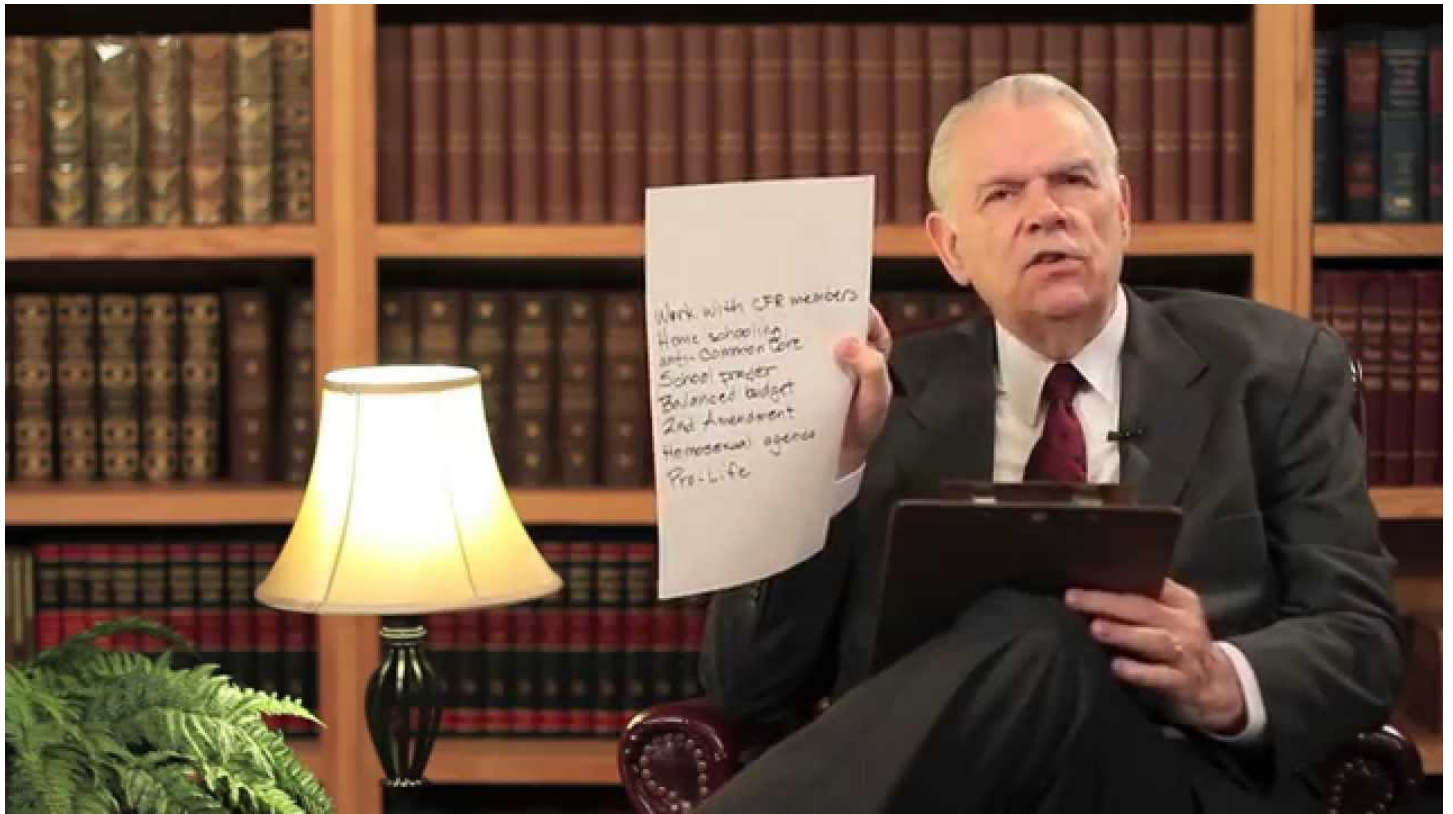


The John Birch Society

Author: [CSpoehr](#)

Date: March 16, 2015



JBS CEO Art Thompson's weekly news video update for March 16 - 22, 2015.

In this week's Analysis Behind the News video, JBS CEO Art Thompson discusses how some conservative leaders endorse the usual conservative platform of issues (pro-life, 2nd Amendment, balanced budget, etc.), but at the same time support initiatives, such as transoceanic unions and constitutional conventions that would negate those conservative issues.