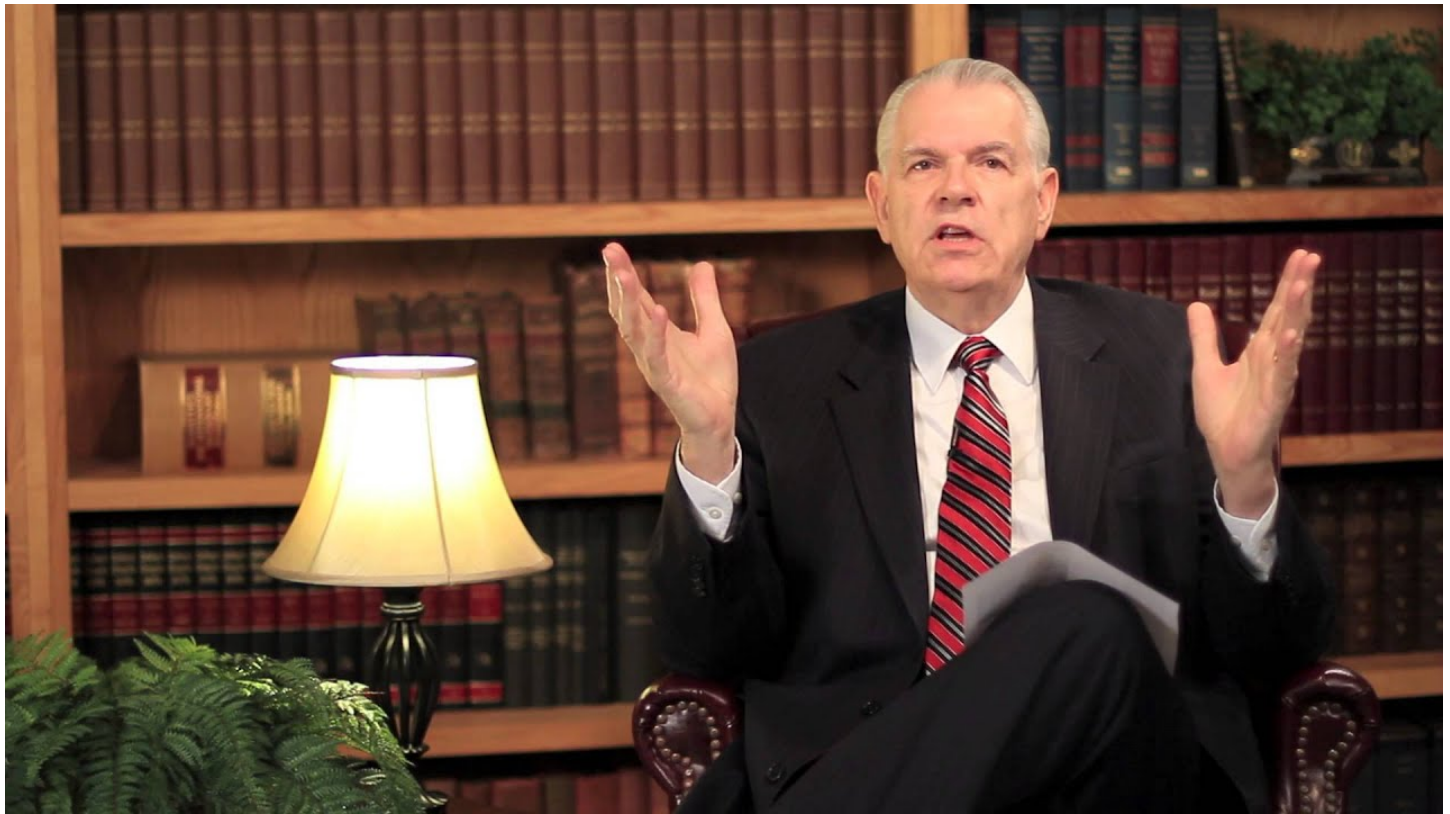


# The John Birch Society

Author: [CSpoehr](#)

Date: July 1, 2013



JBS CEO Art Thompson's weekly news video update for July 1 - 7, 2013.

In this week's analysis behind the news video, JBS CEO Art Thompson discusses how Fed Chairman Ben Bernanke is being portrayed in the same imagery as Vladimir Lenin; how Nelson Mandela's actual prison cell was a plush apartment and not what the major media is portraying; how Iraq is buying Russian helicopters while China is busy buying Iraqi oil and real estate; and how the ACLU placed a full-page ad in the New York Times for June 30 bragging that they have been supporting the gay rights agenda for eight decades.